

KLIMAGIEL®

Fabric and Metal Ducts

INSTALLATION INSTRUCTIONS FOR STEEL SEMICIRCULAR DUCTS

KLIMAGIEL®

CUSTOMER SERVICE

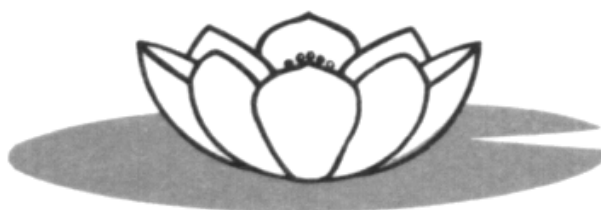
Tel. +39 045 916672

Fax. +39 045 8344222

e-mail: klimagiel@klimagiel.it

Via Mezzacampagna 52 int. 37

37135 Verona



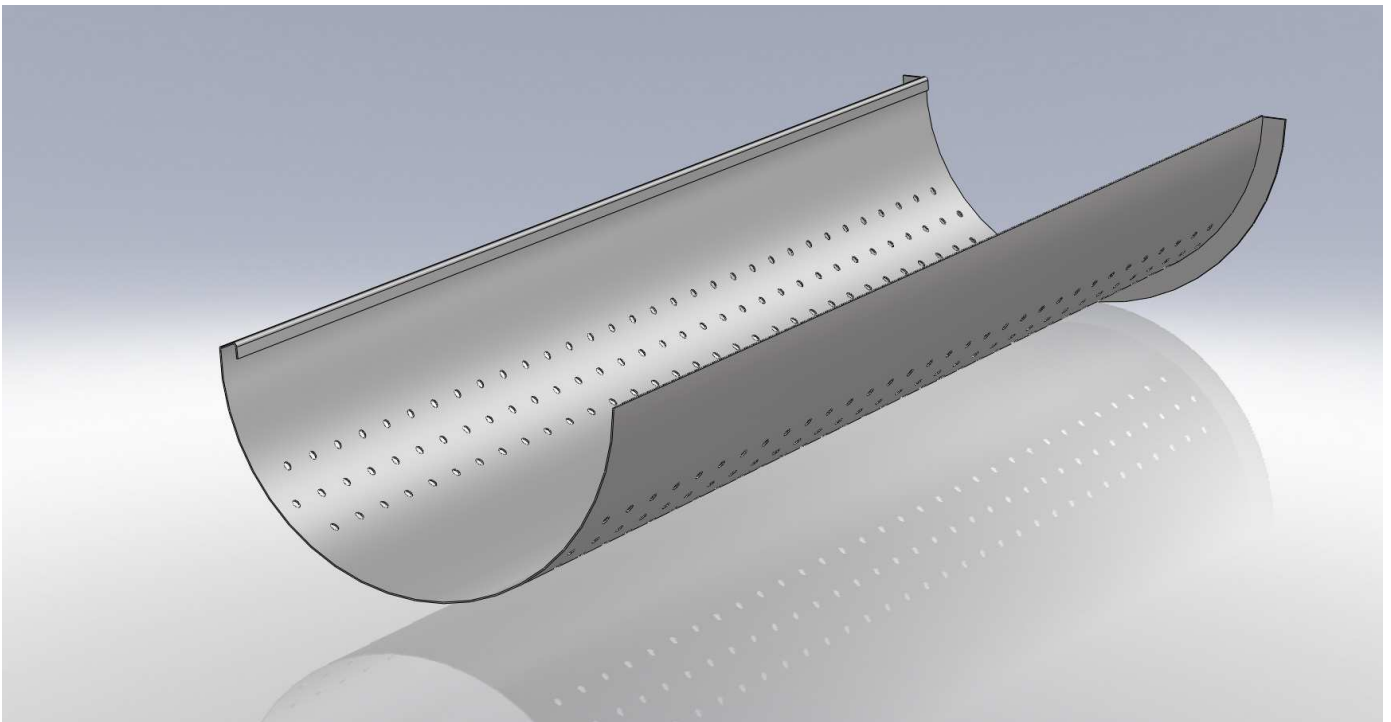
SUPPLIED ITEMS

The items supplied by KLIMAGIEL are:

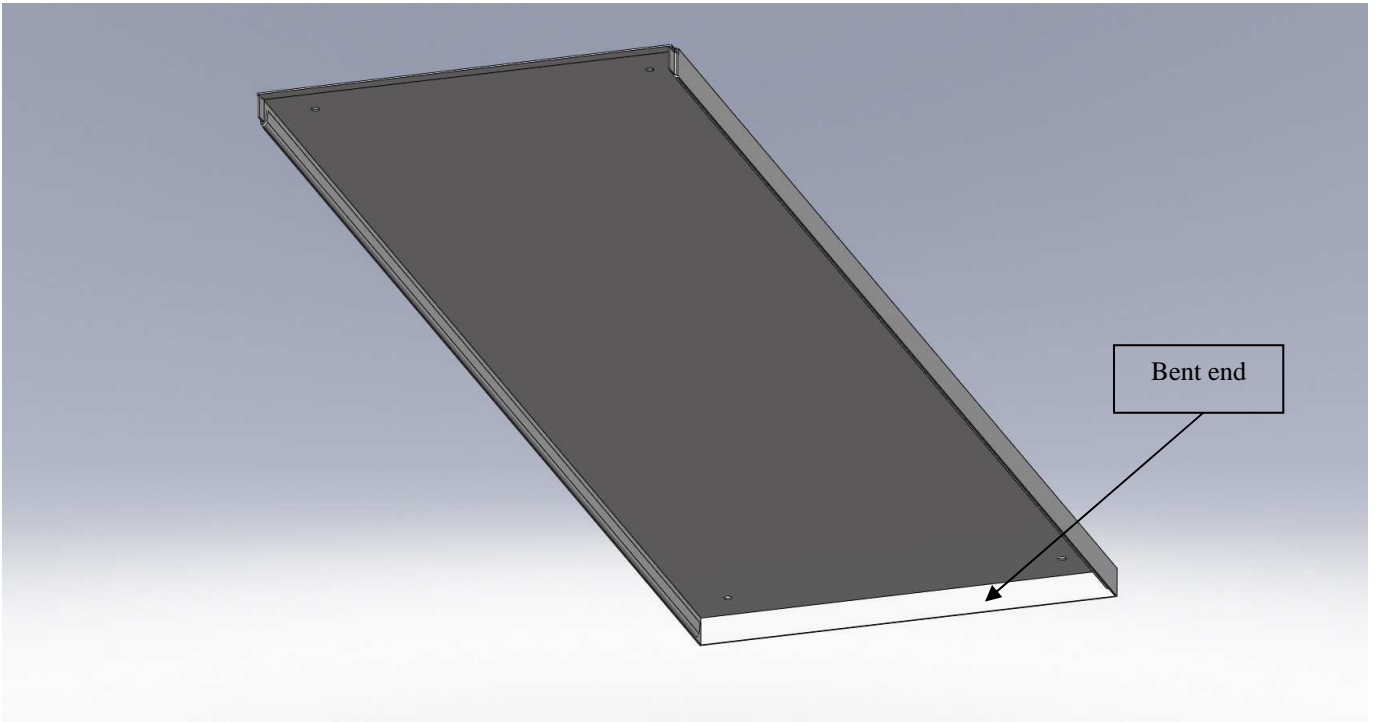
- Initial duct segment that functions as entrance, with a cuff on the entrance side, Picture 1;
- Semicircular duct segments;
- Initial closing plate, with the end on the entrance side bent and with the end on the opposite side thinned down in order to insert the following segment, Picture 2;
- Closing plate, metal sheets to fasten at the ceiling and at which hang the duct segments, Picture 3;
- Fixing bars duct-closing plate (two for each duct segment) Picture 4. At the ends of these bars there are two holes made in order to allow the disassembly through a hand tool with angled tip (Picture 5) **not supplied by Klimagiel**;
- Closing plate for the last and terminal segment, fitted in order to fasten the closing cape, Picture 6;
- Closing cape.

PLEASE NOTE the screws (6 for each duct segment) to fix the closing plate at the ceiling are **NOT** supplied by KLIMAGIEL.

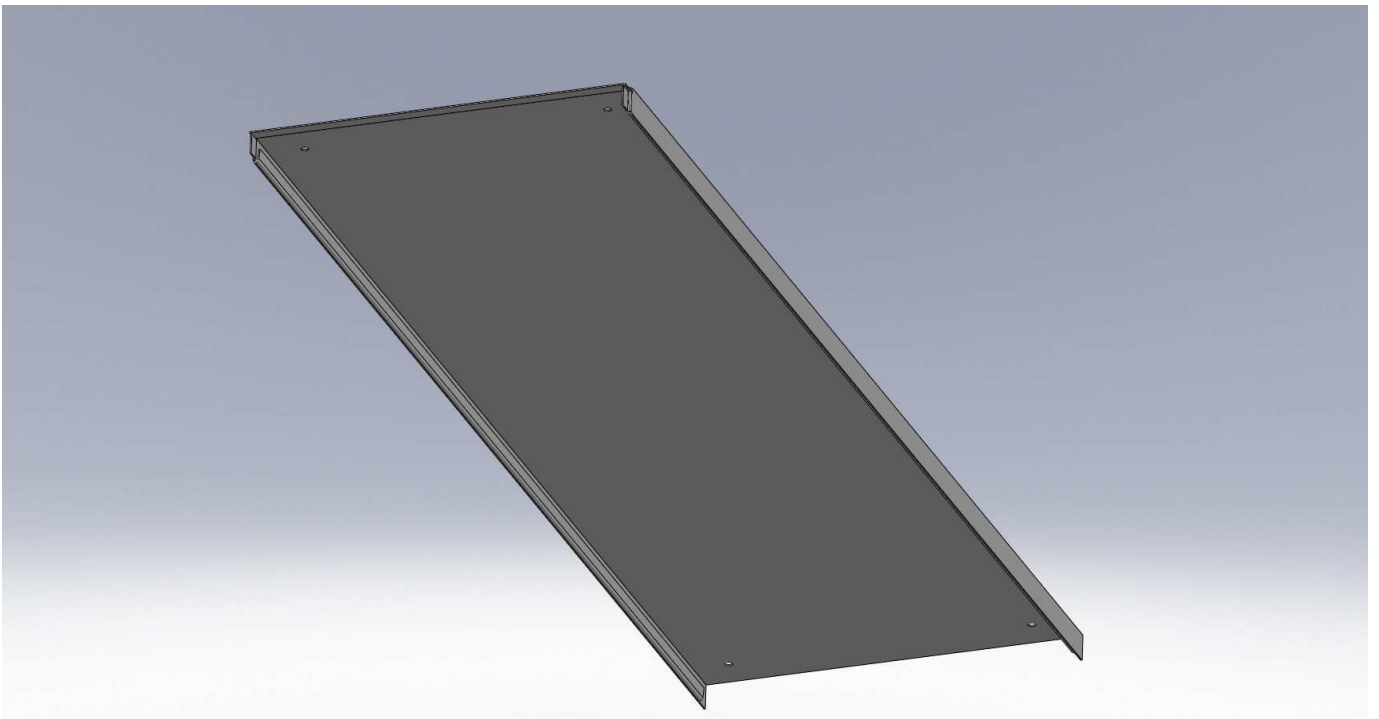
To proceed with the ducts installation we recommend to use gloves with performance level of 4343, according to the law EN 388.



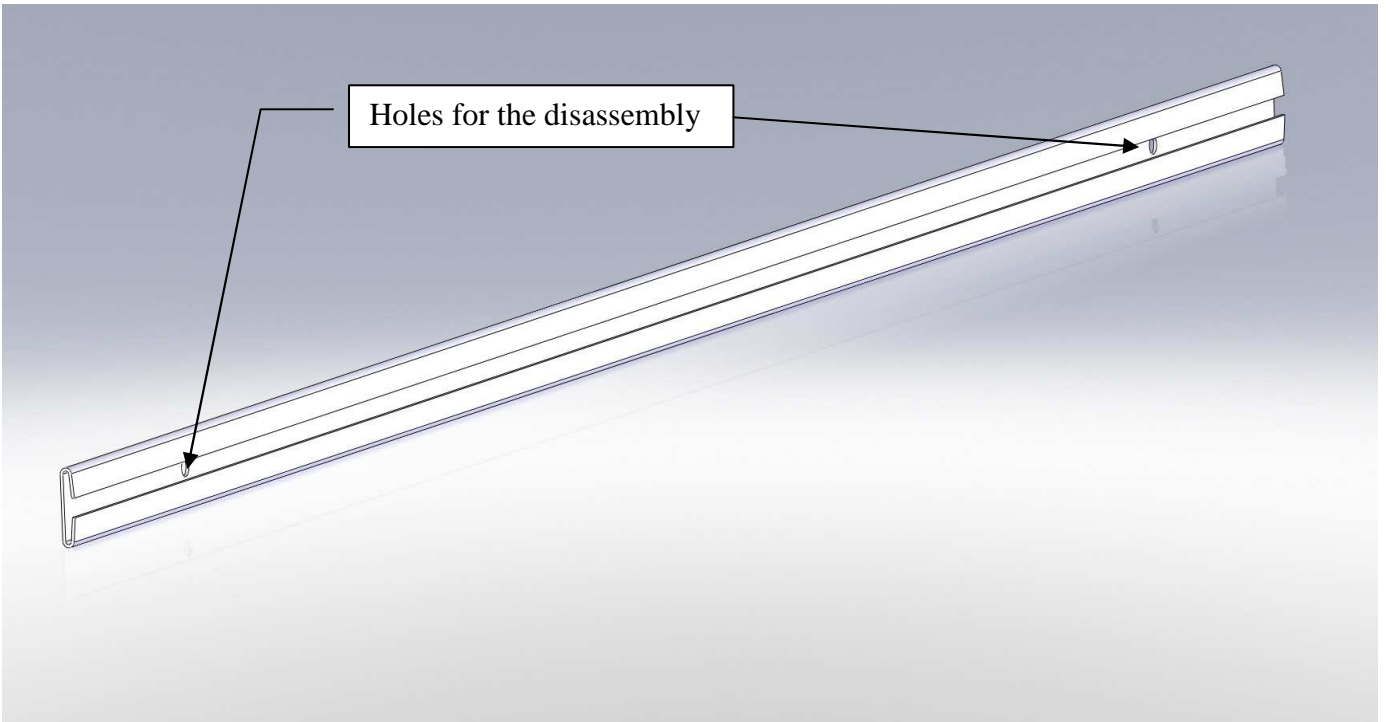
Picture 1 - Initial duct segment for duct entrance.



Picture 2 - Initial closing plate.



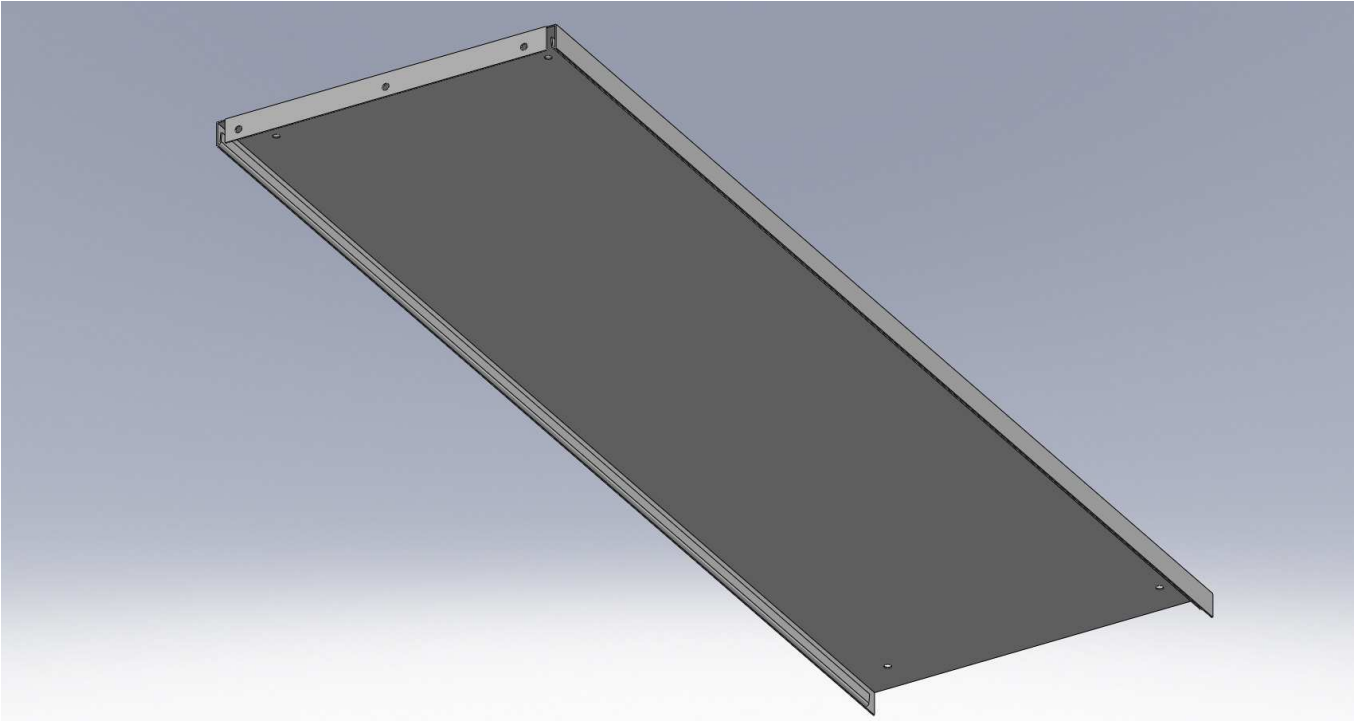
Picture 3 - Closing plate for intermediate duct segments.



Picture 4 - Fixing bar to fasten the duct with the closing plate (2 for each segment).



Picture 5 - Hand tool with angled tip for the fixing bar disassembly.

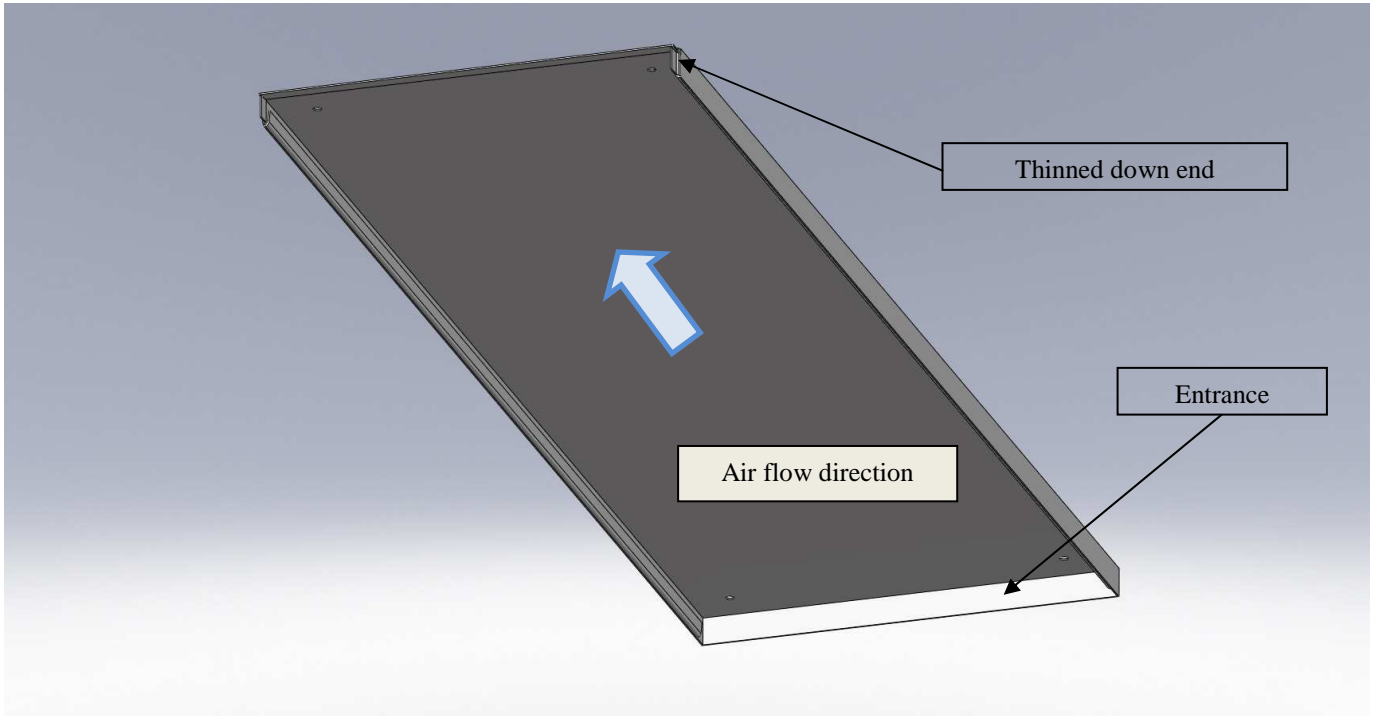


Picture 6 - Terminal closing plate with bent end.

DUCT ASSEMBLY

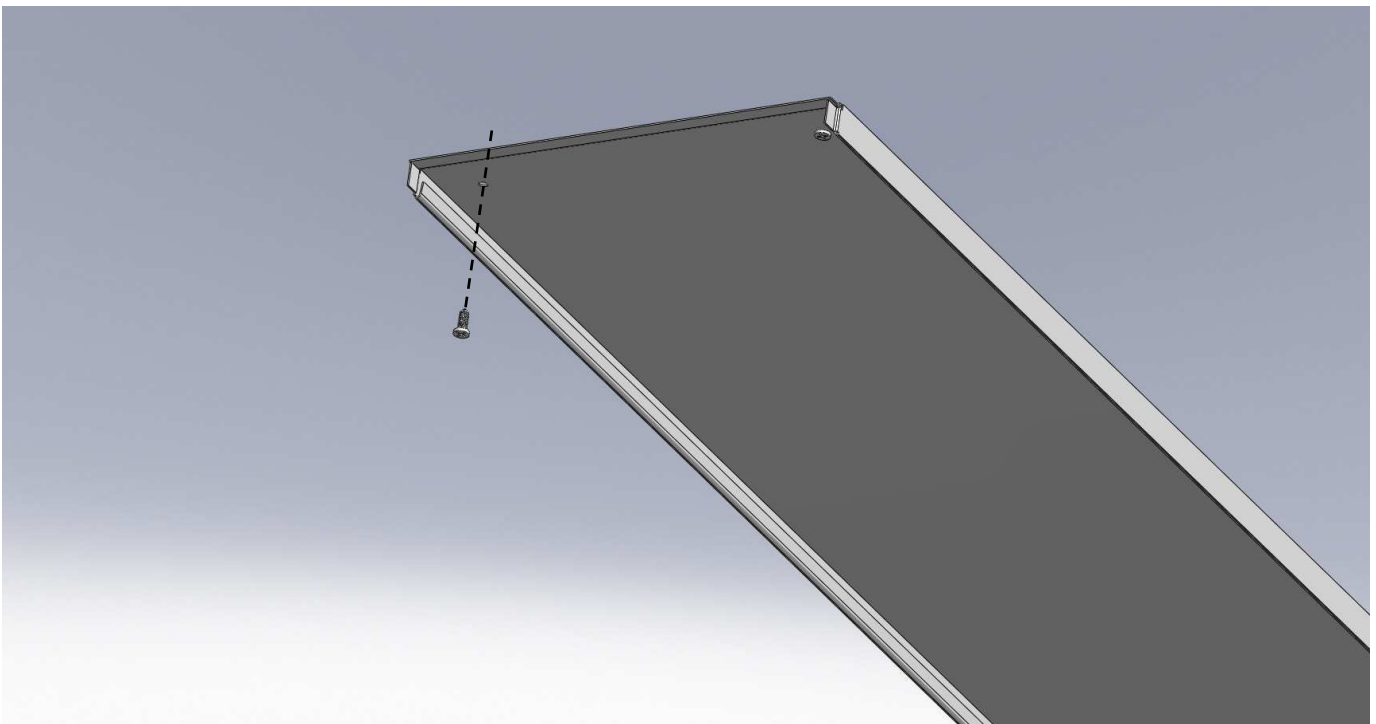
DUCT CLOSING PLATE FASTENING

- 1 Place the initial closing plate of the ceiling duct as shown in Picture 7, that is consistent with the air flow;



Picture 7 - Way to place the closing plate in respect to the air flow.

- 2 Fasten the closing plate at the ceiling through the specific screws NOT supplied by Klimagiel, Picture 8;

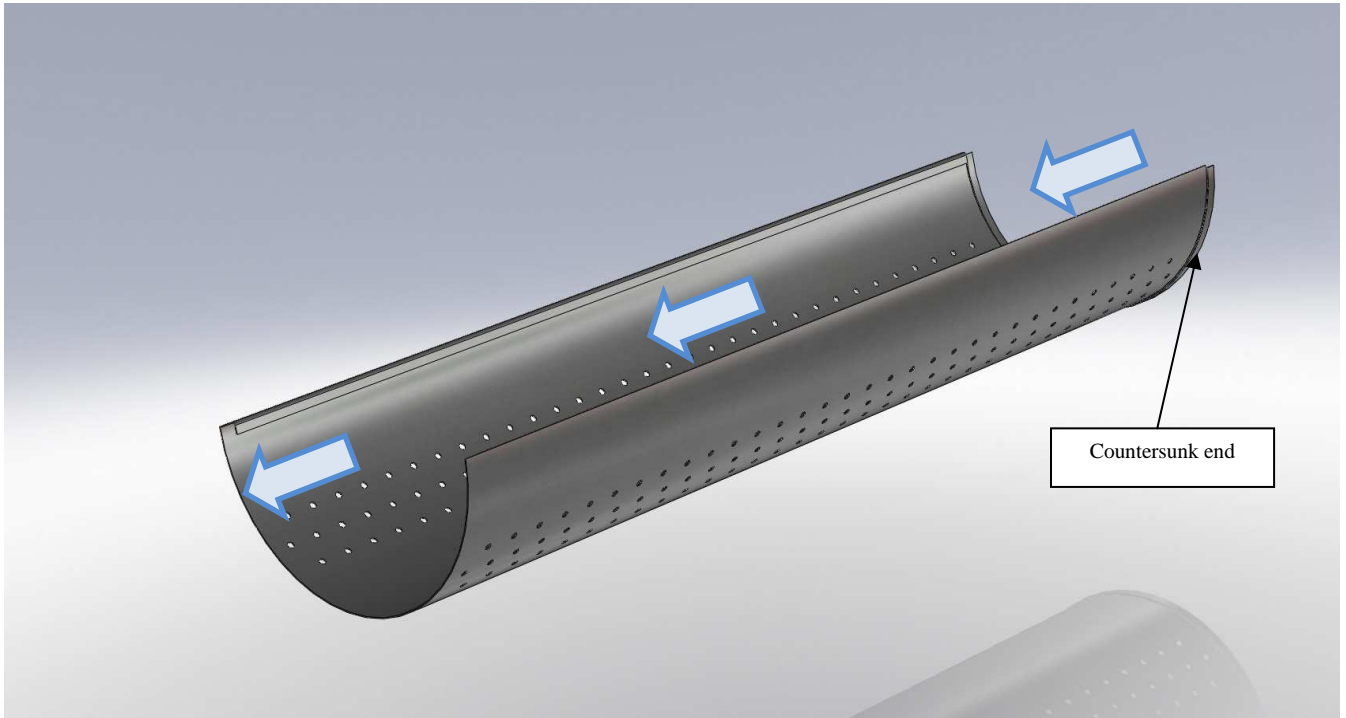


Picture 8 - Closing plate fastening at the ceiling.

SEMICIRCULAR DUCT ASSEMBLY

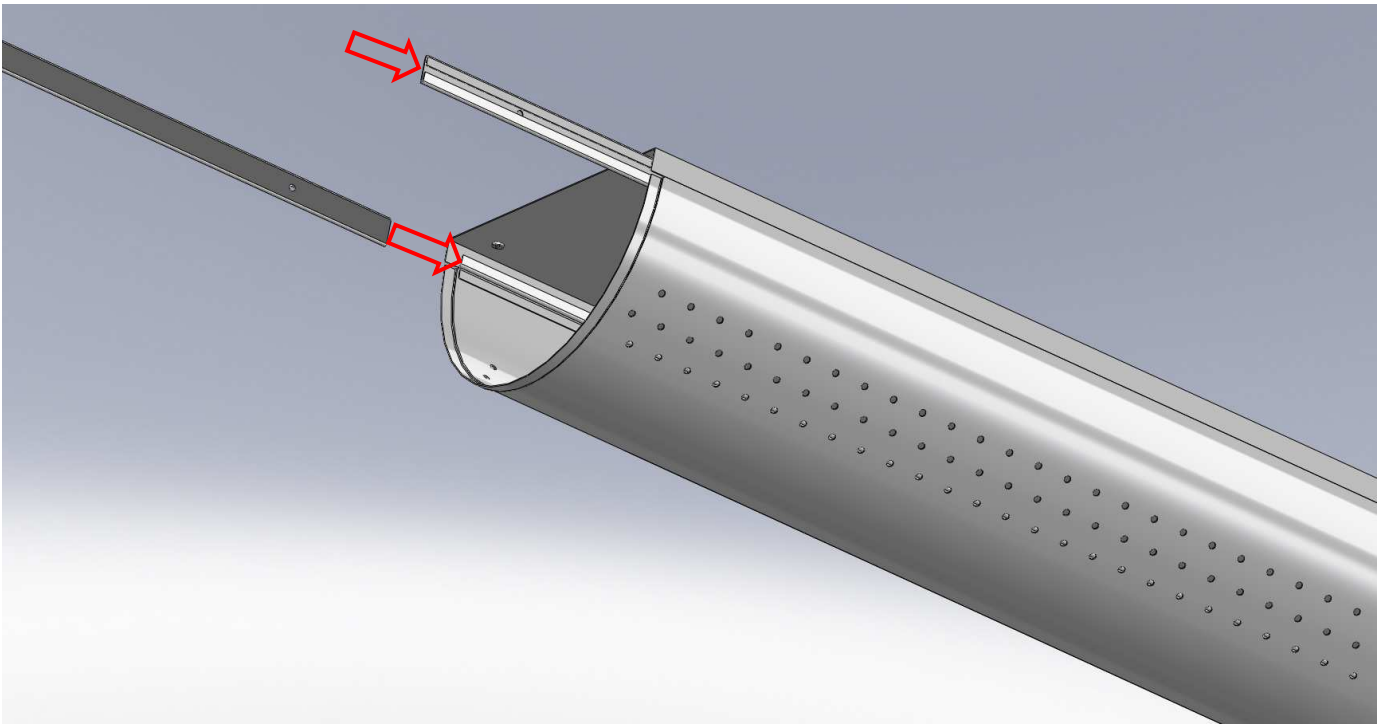
Way to assemble the duct:

PLEASE NOTE: you have to assemble the duct in order that the air flow goes from the countersunk end to the smooth one, as shown in Picture 9.

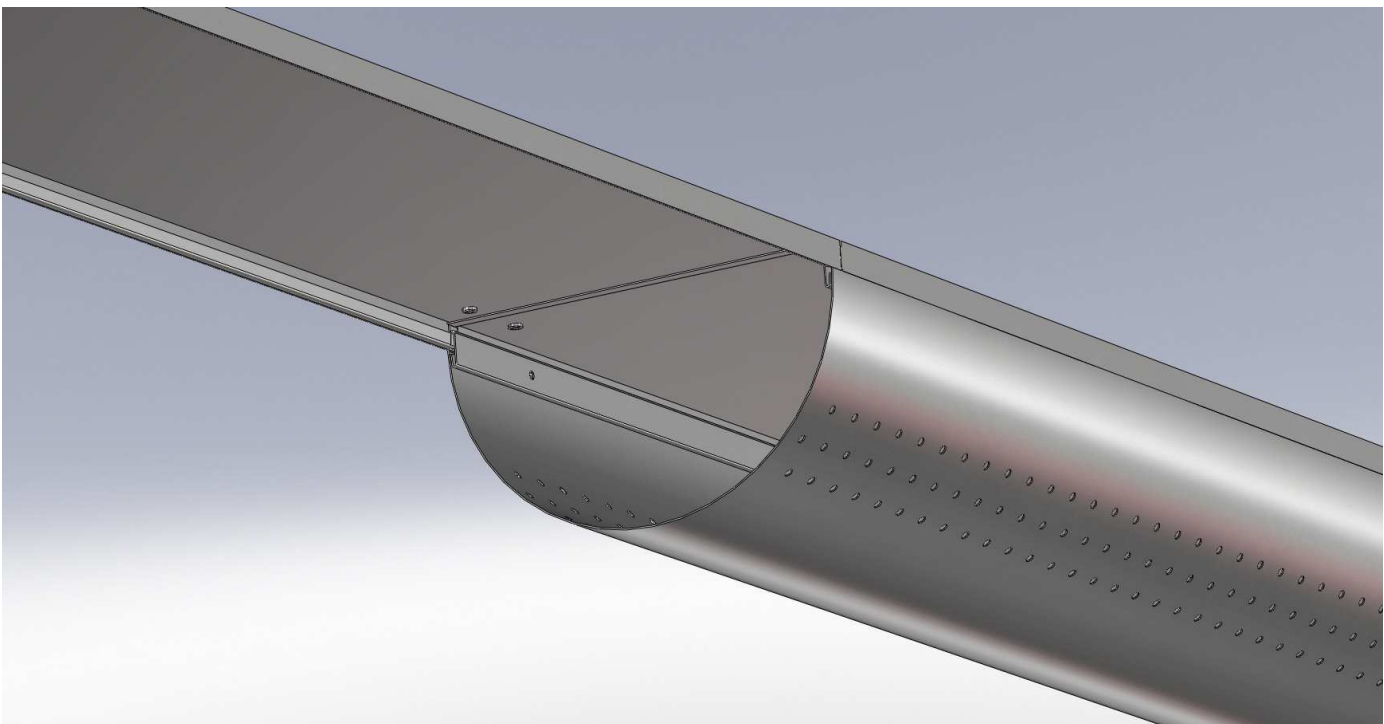


Picture 9 - Assembly direction of the duct segments, the arrows show the air flow.

- 3 Once you have fastened the closing plate at the ceiling, you have to hang the duct at the closing plate by inserting first the initial segment (drawn in Picture 1). As shown in Picture 10 the segments are inserted by means of the two fixing bars supplied for each segment. To proceed with this procedure we recommend to use an appropriate rubber hammer;

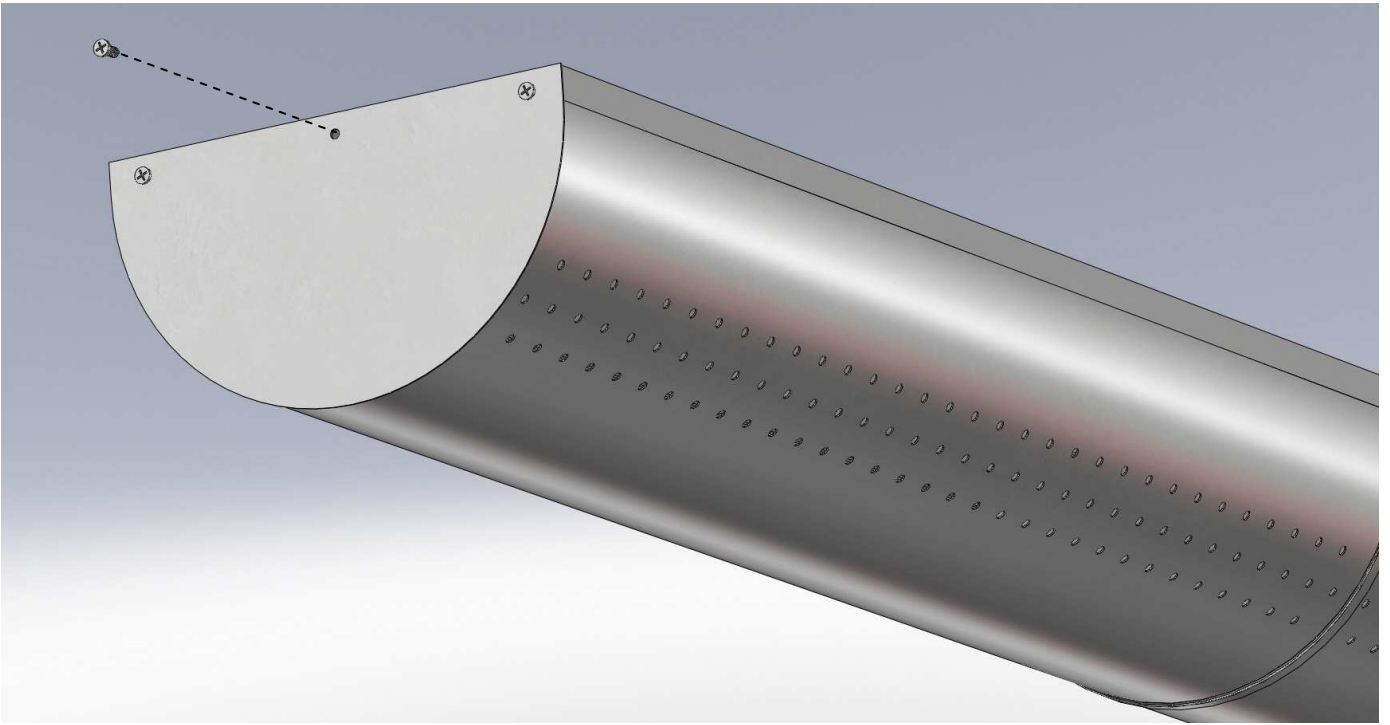


Picture 10 - Duct segments fastening at the closing plate by means of the specific fixing bars.



Picture 11 - Example of a segment accurately assembled.

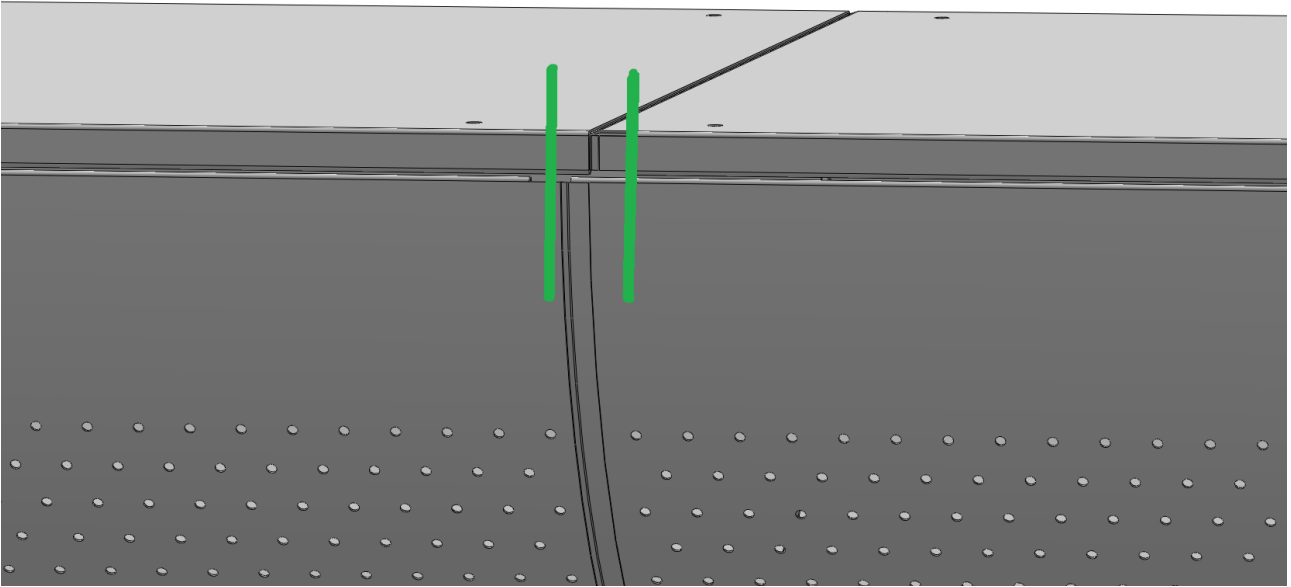
- 4 After you have inserted the last segment, you have to fasten the closing cape at the terminal closing plate by means of the supplied threaded screws, Picture 12. In order to guarantee the duct seal you have to apply silicone all along the cape edge sealing it.



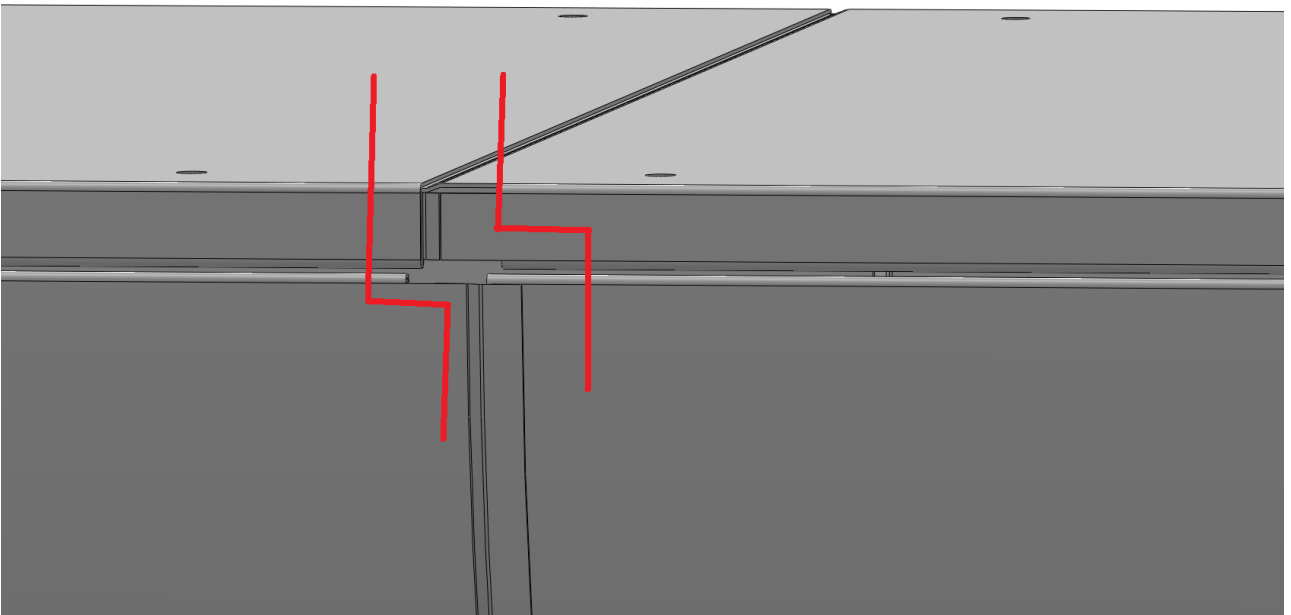
Picture 12 - Closing cape fixing.

Notes:

Pay attention at the correct alignment of the duct segments, as shown in Pictures 13 and 14.

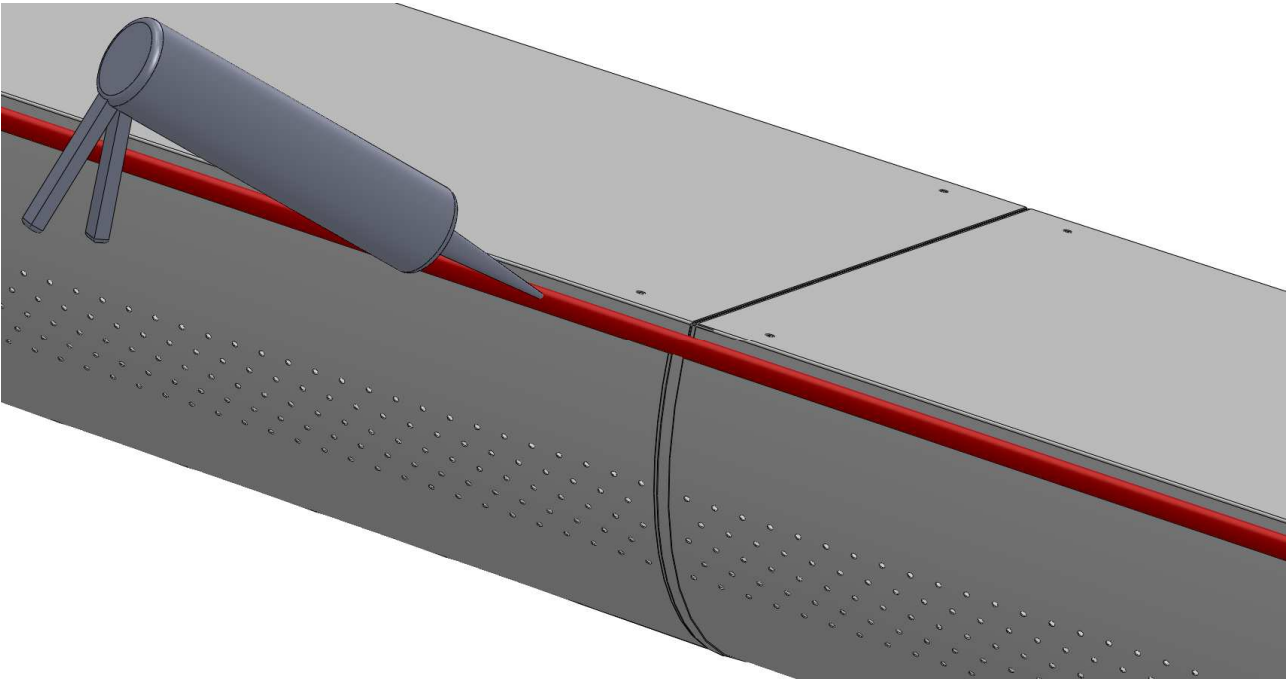


Picture 13 - Correct alignment between duct segments.



Picture 14 - Wrong alignment between duct segments.

In order to guarantee a better duct seal, and to prevent the noise made by air spills you have to apply silicone all along the junction between the closing plate and the duct (Picture 15).



Picture 15 - Silicone application.